



SERVING
K-12
EDUCATORS

Empowering Educators to be their best

eLearning
AccuEd.com | AccuEdConnect.com

Onsite Training
AccuTrain.com

Innovative Schools Summit
InnovativeSchoolsSummit.com

YouthLight
YouthLight.com



IMPROVING OUTCOMES WITH EXPERT INSIGHTS

MISSION

AccuTrain's mission is to serve K-12 educators and students by providing inspiring, insightful professional development for teachers and administrators featuring the greatest minds in education.

INNOVATIVE SCHOOLS SUMMIT

Experience the Innovative Schools Summit — the nation's top K-12 education conference that brings together internationally recognized thought leaders, administrators, teachers and consultants to share innovative best practices and research-based methodologies in an engaging event.

E-LEARNING

AccuEd Connect enables you to deliver critical training to your educators need when and where they need it . The AccuEd Connect learning management system makes it easy to manage and track training from anywhere, with automatic documentation. Need training for a small group, or want to empower educators to create their own learning journey? Check out AccuEd where individuals can choose from dozens of master classes featuring thought leaders in education.

ON-SITE TRAINING

AccuTrain experts will inspire and energize your educators with personalized instruction and best practices in social-emotional learning, classroom management, school discipline and school culture. The popular Responsibility-Centered Discipline™ program has helped thousands of educators create a culture of student self-responsibility in their schools – transforming behavior and academic outcomes.

YOUTHLIGHT

YouthLight provides counselors and educators with resources to maximize their effectiveness with youth and enhance social emotional learning. Create a high-impact learning environment with digital Smart Connect™ lessons, interactive games, discussion-starting Thumballs® and curricula on topics such as self-regulation, mindfulness, trauma, emotional intelligence and anxiety.

EDUCATION CONFERENCE

INNOVATIVE SCHOOLS SUMMIT

Take your school to the next level of innovation and excellence with the Innovative Schools Summit. The Summit provides a unique opportunity for educators, administrators and school counselors to come together and explore the latest trends, strategies and best practices in education from K-12 thought leaders. Each Summit features 4 co-located conferences to meet the needs and challenges you and your educators face in your school. Create your own learning experience by choosing sessions from any of the 4 conferences.



INNOVATIVE TEACHING STRATEGIES™ CONFERENCE



AT-RISK STUDENTS™ CONFERENCE



ELL CONFERENCE™



SOCIAL-EMOTIONAL LEARNING™ FORUM



INNOVATIVE SCHOOL LEADERSHIP™ FORUM



WIRED DIFFERENTLY TRAUMA-INFORMED™ SCHOOLS CONFERENCE



SCHOOL DISCIPLINE™ CONFERENCE



SCHOOL CLIMATE & CULTURE™ FORUM



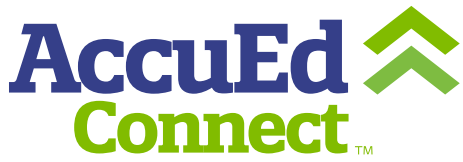
INNOVATIVE COUNSELING STRATEGIES™ CONFERENCE



Nashville | Las Vegas
San Antonio | Chicago
New York | Orlando

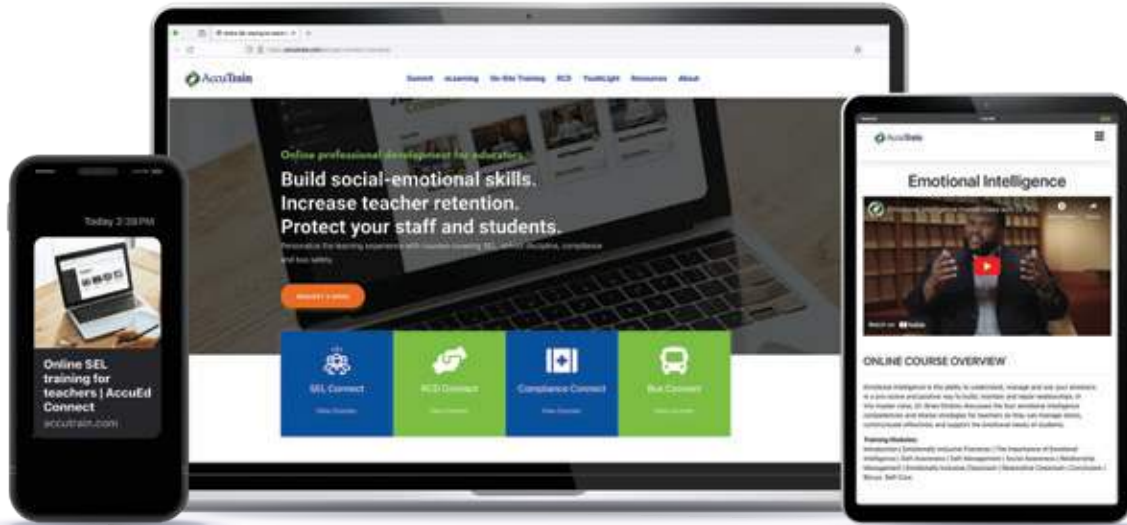
- Supporting SEL Competencies
- Addressing Unfinished Learning
- Supportive Discipline
- Helping Vulnerable Students
- Transforming School Climate
- Addressing Learning Loss
- Supporting All Students
- Engaging Learners for Success
- Trauma-Informed
- English Language Learners

PROFESSIONAL DEVELOPMENT

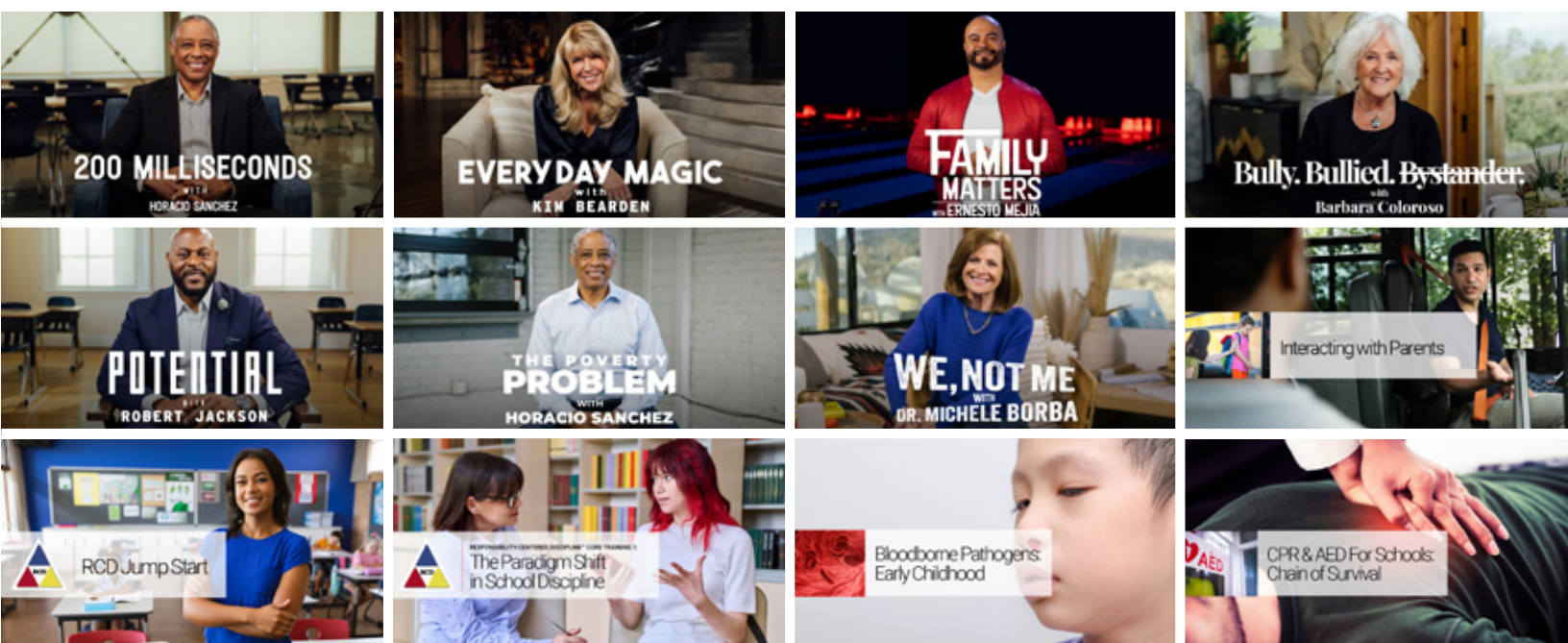


Deliver & Track Critical Staff Training for Your School or District. Anywhere, Anytime.

Social, Emotional & Behavioral | Responsibility-Centered Discipline™
Health, Safety & Compliance | Transportation



Provide your team with the training they need to support students effectively, keep your facility safe and enrich your school culture. AccuEd Connect enables you to deliver critical training to your educators need when and where they need it — at home or at school, via computer or mobile device. Four training suites are available to help meet the diverse needs of your employees: SEL Connect, RCD Connect, Compliance Connect and Bus Connect. The AccuEd Connect learning management system makes it easy to manage and track training from anywhere, with automatic documentation.





Learn from the Best in Education

On-demand master classes on SEL, classroom management, teaching strategies and more.

Ideal for individual educators and small groups, AccuEd enables educators to create their own learning journey and access insights from experts in education.

Personalized Learning: With AccuEd, staff members can learn at their own pace, tailoring the professional development experience to their unique needs.

Growing Library: Choose from a broad array of master classes – from culture and climate to student engagement to SEL – allowing teachers to expand their knowledge base and skill set.

Convenience: Master classes can be accessed anytime, anywhere – perfect for busy teachers.

Collaborative Learning: Small groups can collaborate and learn together, providing opportunities for peer feedback and shared understanding.

Continuous Professional Development: AccuEd empowers educators to stay updated with the latest teaching methods, learning technologies and classroom management best practices.

Cost-Effective: Learn from the best in education for as little as \$16 per month.



Expert Insights

Tap into insights from thought leaders on transforming classroom behavior, creating responsible students, closing the attitude gap, mental wellness and more.



30+ Master Classes

New master classes are launched regularly, keeping you in the know about the latest issues and methods to learn.



Got 15 Minutes?

Invest in yourself and your career with AccuEd. Each 2-hour master class is comprised of short training segments so you can elevate your skills in 15 minutes or less.

WATCH ANYWHERE. LEARN ANYTIME.



SCHOOLING FOR RESILIENCE
WITH
DR. PEDRO NOGUERA



TEACHING CHILDREN FOR RESILIENCY
WITH
MICHELE BORBA



THINK LIKE A BOY and THINK LIKE A GIRL
WITH
DR. MICHAEL GURIAN



STOPLIGHTS & STICKY NOTES
WITH
DR. JOHN ALMARODE



THE SIX EXITS
WITH
LARRY THOMPSON



EMPOWERING GIRLS AND RESOLVING DRAMA
WITH
TRACIE BERRY-MCGHEE



EMOTIONAL INTELLIGENCE
WITH
DR. BRIAN DINKINS

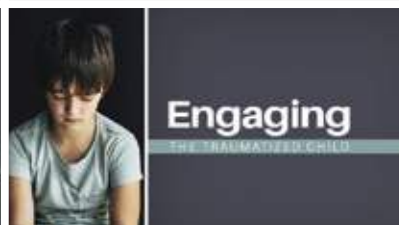


THE PERFECT TIME TO QUIT
WITH
MICHAEL BONNER

SKILL DEVELOPMENT

ON-SITE TRAINING

Bring the Best to Your Next Professional Development Session – AccuTrain's on-site workshops will help your educators develop the skills to support their own well-being and to help students succeed in the classroom and beyond. Our experts can help your educators manage student behavior challenges, support at-risk students, promote positive mental health and ensure every student feels safe and supported.



RESPONSIBILITY-CENTERED DISCIPLINE



Responsibility-Centered Discipline™

Helping schools build systems that help kids learn to take responsibility for their behaviors, and thus, create an environment that brings out the best in everyone.

↓ **79%**

Decline in behavior incidents in Year 2 at a high school in Kansas City, MO

↓ **63%**

Decrease in office referrals by Year 3 at a middle school in Corning, NY

↓ **51%**

Drop in suspensions in Year 1 at a high school in Iola, KS

↓ **40%**

Decline in discipline referrals in Year 1 at an elementary school in Columbus, OH

Responsibility-Centered Discipline™ (RCD) has helped educators across North America transform student discipline and improve school climate over the past decade. Not only have RCD schools seen significant decreases in office referrals, detentions and suspensions, they have also moved away from an obedience-based classroom discipline model to a model that is centered on students taking responsibility for their own behavior as well as their own academic success.

Educators understand that behavior and effort are often impacted by the relationships they have built with students. When emotions escalate, those relationships are tested — and often damaged. Responsibility-Centered Discipline helps educators to be prepared when situations come to a boil. By empowering educators to effectively manage challenging behaviors in the classroom — or “challenging moments” — RCD schools typically see a significant improvement not only in behavior management, but also in student and teacher satisfaction, school climate and academic achievement.



Self-Regulation

Evidence-Based Strategies to Teach Social Emotional Skills

Self-Regulation is a universal set of skills necessary for academic success, emotional control and healthy social interaction.

As the term "Self-Regulation" suggests, this training focuses on teaching students how to regulate their own emotions and behaviors. The Self-Regulation Training System is a simple, organized method for teaching children and teens these skills.

Earn 6 Contact Hours

When a young person is lacking in the ability to control emotions and behaviors, negative outcomes are easily observable. Giving students the tools to improve their Self-Regulation skills can help them better handle:

- > Academic challenges
- > Anger issues
- > Anxiety
- > Social difficulties
- > Classroom behavior issues
- > Self-esteem struggles
- > Defiance
- > Impulsiveness

Would you like your teachers, counselors and administrators to master creative, fresh and engaging approaches to use with individual students, small groups, classrooms and the entire school? In this one-day training workshop, they will be given recommendations and strategies to use with all students and, in particular, with those who have behavioral and/or emotional self-control issues. Your staff will leave with practical insights, recommendations and learning activities that are based upon the evidence-based approaches used in cognitive and behavior psychology.

Seminar Presenter



A leading authority on self-regulation, **Brad Chapin, LCP, MLP** is a masters level psychologist with a passion for helping others learn the skills necessary for success and happiness. He is a best-selling author and nationally-recognized speaker in the area of self-regulation. He has served as the Director of Child and Adult Community Services for a large community mental health center where he supervised 65 mental health field staff. Currently, Brad is the Director of Clinical Services for Stormont-Vail Behavioral Health Services.

Intentional Self-Regulation

Self-care Skills that Support Teacher Well-being



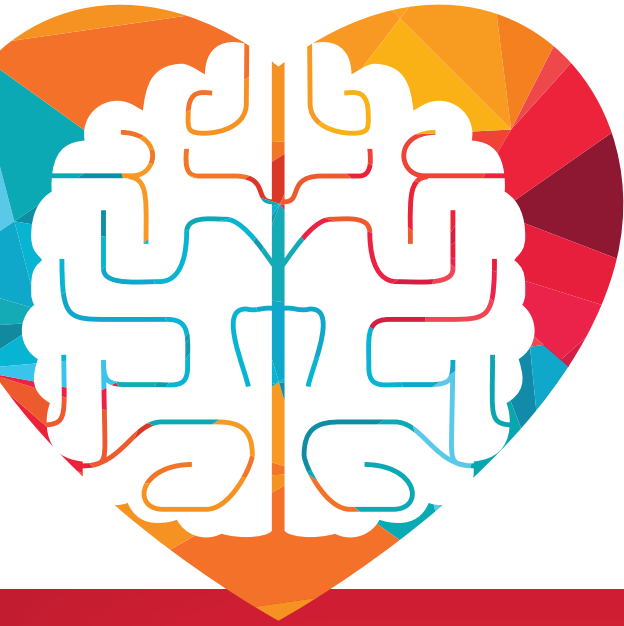
Personally and professionally, teachers are experiencing toxic levels of stress due to the following:

- High levels of physical and emotional threat for an extended period of time
- Needs exceeding existing coping resources
- Trauma exposure
- Isolation
- Loss and grief
- Burnout and moral injury

These experiences have a profound impact on job performance, our health and relationships. Additionally, even if the physical threat of the illness subsides, the emotional impact is likely to linger. Most individuals are managing significant and unprecedented challenges without the benefit of formal training or the skills to manage effectively. However, individuals can benefit from developing advanced regulation skills and resiliency.

Learning Objectives

Participants will gain clarity by moving beyond vague advice on how to manage challenge to developing a clear, practical skill set. Participants will grow and leave with a personal plan with emphasis in three areas of skill development in physical, emotional, and cognitive regulation.



Emotionally Inclusive Practices

AN EMOTIONAL, CULTURAL
AND RESTORATIVE FRAMEWORK

Emotionally Inclusive Practices

Developing the Social, Emotional and Academic Skills of
Leaders, Teachers and Students



About the Presenter

Brian Dinkins is CEO of the National Institute for Child Empowerment, an organization that provides parents and

students in disenfranchised communities with training, mentoring and advocacy to increase access to college and careers. Raised by a single mother in the inner city of Indianapolis, he didn't perform well academically in high school. With the support of teachers, coaches and mentors, he earned a B.A. from Purdue, where he played football for the Big Ten Champion Boilermakers. Brian has served as a teacher, coach and principal in urban settings at a traditional public school, two charter schools and at a faith-based school. He is an RCD Certified Master Trainer, an associate professor and Director of Experiential Program for Preparing School Principals (EPPSP) at Butler University.

Emotionally-Inclusive Practice (EIP) is the practice of integrating emotion into every part of the educational experience. Emotions lay the foundation for behavior that grounds us in how we see the world and how we respond in our everyday interactions. Developing the emotional intelligence of adults and children across our implicit bias, cultural consciousness and understanding student and/or our own trauma gives us the awareness and skill to create restorative communities that prioritize all relationships.

EIP is a practical, skills-based framework. Leaders, teachers, staff and students learn and apply a set of six core practices that transform the classroom and school community.

PARTICIPANT OUTCOMES

Emotionally Inclusive Practices focus on improving six key performance indicators that impact school culture and climate.

These indicators include:

- Increased the emotional intelligence of faculty, staff and students
- Improved classroom management
- Dramatic reduction in office referrals
- Improved sense of community and belonging by students and teachers
- Increase in academic outcomes for students
- Fewer trauma-related behaviors
- Improved teacher satisfaction and retention
- Stronger peer-to-peer and student-teacher relationships

Positive Behavioral Supports for Students Who Are **WIRED** **DIFFERENTLY**™

Discover Proven Strategies for Supporting Students with Mental Wellness Challenges

Fact: Approximately 20 percent of students in today's classrooms are diagnosable for a mental health issue according to the National Institute of Mental Health. And there is evidence to suggest that beyond this number, 16 percent are borderline for meeting criteria for a mental health label. That means as many as one in three students in any teacher's classroom may have a mental health issue leading to emotional and behavioral challenges.

These issues run the gamut from "Acting In" disorders like anxiety, mood disorders and Asperger's Syndrome to "Acting Out" disorders like oppositional defiant disorder. Teachers, counselors, administrators and other school personnel must be given tools to get the most out of this high-potential, neurodiverse group of students. Unfortunately, these issues can be undiagnosed and are easily misunderstood – and may be treated as simple discipline issues.

With the current emphasis on inclusive classrooms, general education teachers play a primary role in teaching students with mental wellness challenges. Yet, according to recent studies, many feel unprepared to take on this role. The success of inclusion can only be realized if both university educators and staff development programs help to train and continue to educate general education teachers on the various disorders and how these students learn best.

Seminar Presenter



Mike Paget, M.Ed. works as a consultant to schools throughout North America to help them better teach challenging students. As a state consultant for students with severe emotional and behavioral problems, he worked with ODD, CD and other special needs students for more than 25 years. Mike is an innovator of effective approaches for working with extremely challenging students and has conducted seminars across the U.S. and Canada on creative techniques for managing classroom behavior, student aggression and crisis intervention. He is co-author of *Aggressive and Violent Students* and *Defying the Defiance*. His newest book is *High on the Spectrum: Asperger's, High-Functioning Autism & Related Personalities*.



Learning Objectives

- » Recognize common misunderstanding educators may have about these students
- » Restructure traditional practices that often fail
- » Implement do's and don'ts for supporting students with dignity and respect
- » Create a climate that strikes a balance between challenge and support — helping smooth social interactions
- » Develop practical ways to prevent students from riding the mental health escalator

Earn 6 Contact Hours!

TOOLS AND RESOURCES



Best in Education Books
Online Interactive Lessons
SEL Curricula
Workbooks / Activity Guides
Animated Storybooks

Thumballs®
Games and Card Decks
Manipulatives
Interactive Learning Mats
Online Interactive Games

Innovative
Tools and
Resources for
Students &
Staff



SMART CONNECT™



THUMBALLS®



GAMES



CURRICULA





SERVING
K-12
EDUCATORS

**Contact us to learn
how we can support
your PD initiatives and
help your educators
become their best.**

info@AccuTrain.com || 800-775-9674